



# 10 SUGGESTIONS

for starting a

*Compassion Ministry*





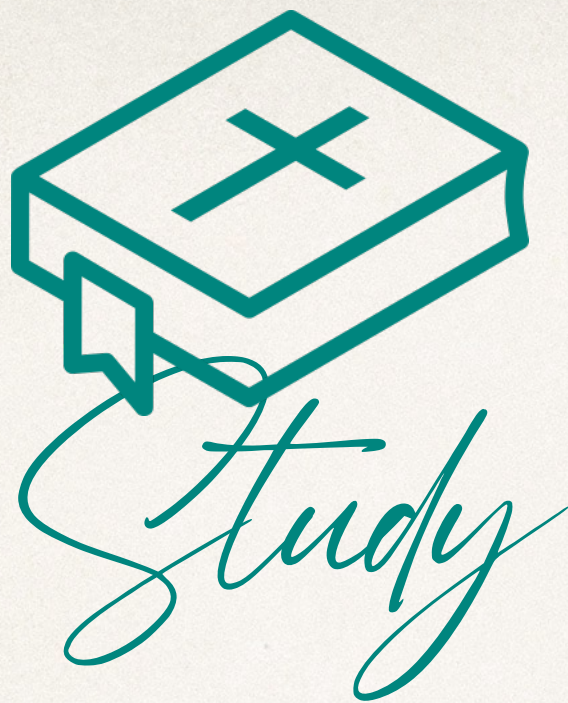
## GOD'S WILL

---

- ♦ Pray over every part of the process
- ♦ Ask God's guidance as you conduct surveys, interpret information, enlist and train leadership and volunteers, and develop ministries







## the WORD OF GOD

---

♦ Throughout the Old Testament God commands special care be given to widows, orphans, and strangers

- Leviticus 19:34, 23:22
- Deuteronomy 10:18-19, Deuteronomy 24
- Psalm 146:9
- Zechariah 7:10

♦ In the New Testament we are told many times to do good works

- Ephesians 2:8-10
- 1 Timothy 6:18
- Titus 3:14
- Hebrews 10:24
- 1 Peter 2:12
- Romans 12:21
- James 2:14-17
- 1 John 3:16-18

♦ Jesus modeled Compassion ministry

- Luke 4:18-19
- Luke 7:18-23
- Matthew 4:23

♦ Matthew 25:31-46 tells us we will be accountable for the ways we served others





# *Determine*

## YOUR PURPOSE

---

- ♦ Keep evangelism at the center of your ministry. Do not assume evangelism will happen. Determine beforehand how to incorporate intentional gospel sharing.
- ♦ Conduct evangelism training for leadership and volunteers





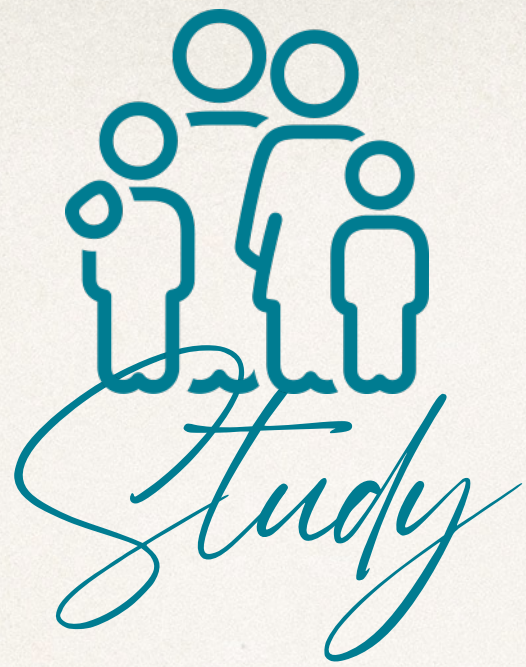


# COMMUNITY NEEDS

---

- ✦ Conduct a Community Needs Assessment (CNA)
- ✦ Talk to community and religious organizations to see what services are already provided and what gaps need to be filled
- ✦ [Community needs assessment](#)

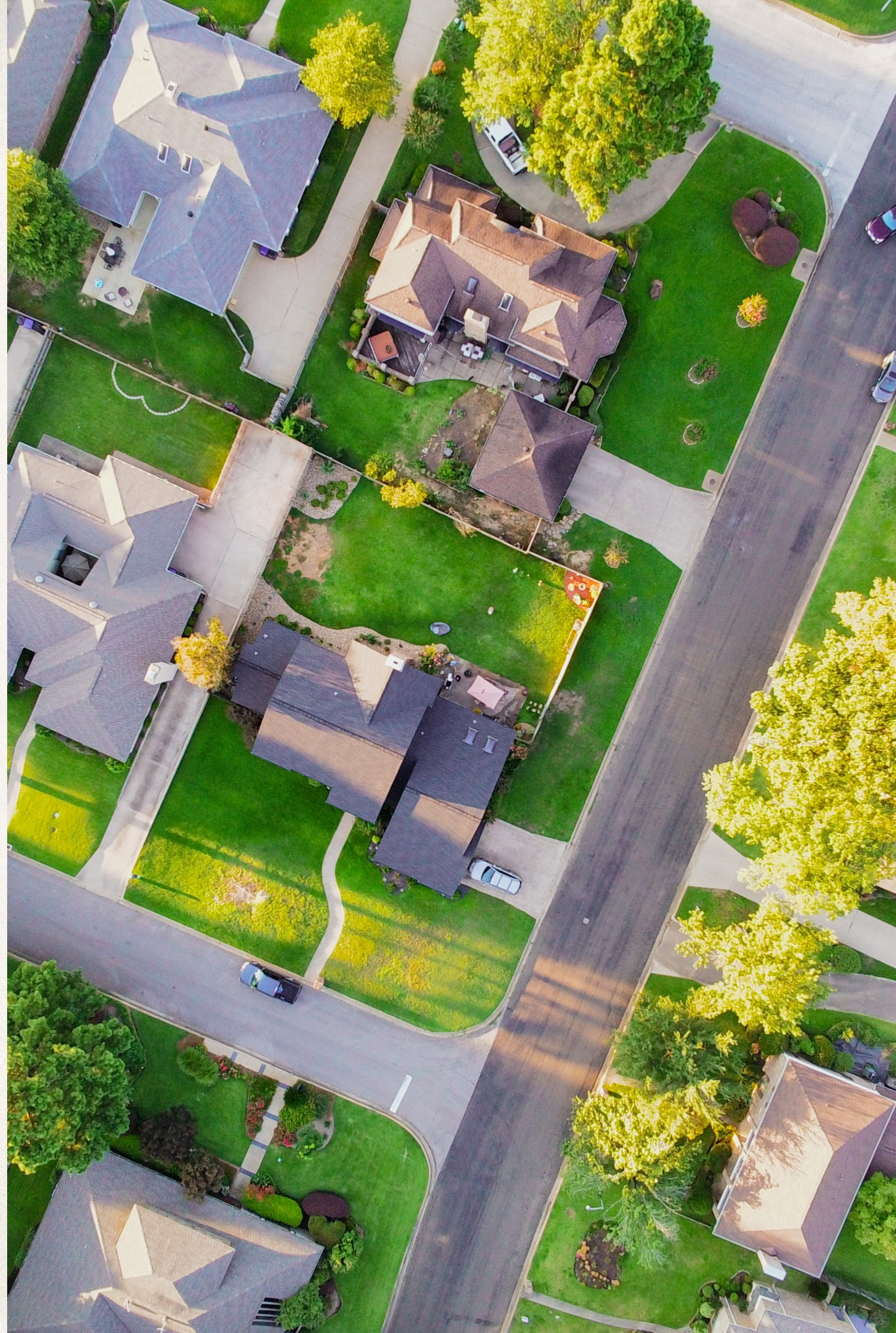




## DEMOGRAPHIC INFORMATION

---

- ◆ Use demographic information provided by TBMB or other agencies
- ◆ Use U.S Census to discover data in the area to be served







*Discover*

## COMMUNITY NEEDS

---

- ♦ Listen to the community you desire to serve to understand their felt needs
- ♦ Use the Community needs survey in a mail out, community outreach event, phone survey or door-to-door
- ♦ Ask your church members to complete the survey with a non-churched friend or neighbor
- ♦ [Community Survey](#)





## CHURCH SUPPORT AND INPUT

---

- Conduct a church survey to discover needs, interests, experiences, and education
- Take note of who God has brought to your church and what God has brought them through (2 Corinthians 1:5)
- Try to discern the interests, passions, and experience God has given your church members that can be used to reach others
- [Church Survey](#)







*Learn*

FROM OTHERS

---

- ♦ Identify other churches and/or ministries doing similar things. Find best practices and learn from the experience of others.
- ♦ The TBMB compassion ministry team can help you find such ministries
- ♦ Read books, blogs, and article relating to the ministry areas your church is passionate about





# Start Small

## AND KEEP RECORDS

---

- ✦ You will discover many needs and unveil many passions but start one ministry at a time. Don't try too much too soon.
- ✦ Do not despise small beginnings (Zec 4:10)
- ✦ Keep records of the people you are serving, volunteers, gospel conversation, decisions, and baptisms.
- ✦ Track the assimilation of the people you reach.
- ✦ Don't let new believers go un-discipled.
- ✦ Register your ministry with [TBMB Compassion Ministry](#)







# Evaluate

---

- ♦ Keep the main thing, the main thing. We never drift toward evangelism; we drift away from evangelism. If the ministry has moved past gospel sharing, it is time to stop what you are doing and return to the purpose of the ministry.
- ♦ Anyone can feed, clothe, educate and meet needs in our communities. We have the words of life. We are called to share the hope of the Gospel! If this isn't happening it is time to stop and reevaluate what is being done.



*for more information*

Visit [www.tnbaptist.org/compassion-ministries](http://www.tnbaptist.org/compassion-ministries)  
or contact Beth Moore at 423.440.6225 or [bmoore@tnbaptist.org](mailto:bmoore@tnbaptist.org)

